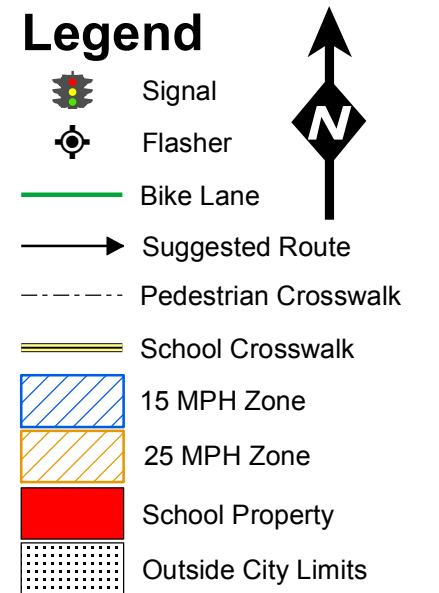
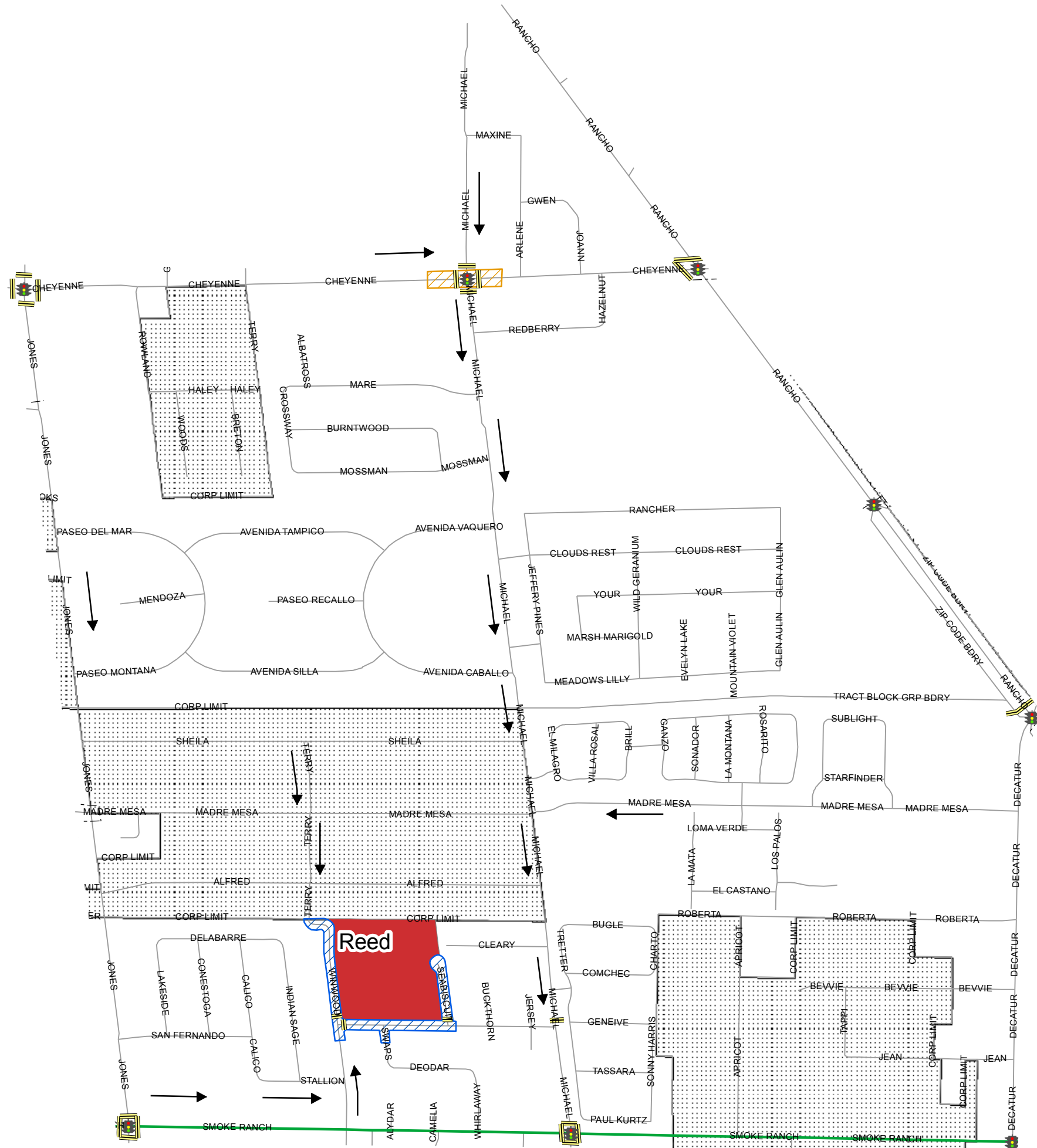


# Reed

## SUGGESTED ROUTE TO SCHOOL

### 2011-2012

CITY OF LAS VEGAS  
DEPARTMENT OF PUBLIC WORKS  
TRAFFIC ENGINEERING DIVISION  
SUGGESTED ROUTE TO SCHOOL  
7/25/11



DISCLAIMER: THIS MAP IS PROVIDED TO ASSIST PARENTS, GUARDIANS AND STUDENTS IN THE SELECTION OF A WALKING/BICYCLING ROUTE TO AND FROM SCHOOL. THE LOCATION OF TRAFFIC CONTROL DEVICES AND ROADWAY CONDITIONS WILL CHANGE, SO PARENTS & GUARDIANS MUST CONTINUALLY REVIEW THE ROUTE WITH THEIR CHILDREN. THIS INFORMATION IS PROVIDED FOR INFORMATIONAL PURPOSES ONLY. NOTHING HEREIN IS WARRANTED BY THE CITY OF LAS VEGAS, AND NO LIABILITY IS ASSUMED BY THE CITY OR THE CLARK COUNTY SCHOOL DISTRICT FOR THE INFORMATION PROVIDED, INCLUDING BUT NOT LIMITED TO THE ACCURACY OF THE DATA SHOWN HEREIN.